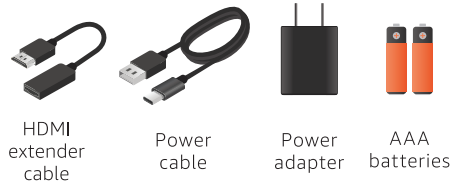


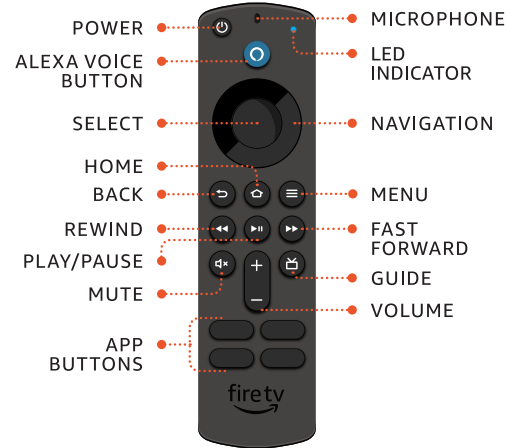
MEET YOUR FIRE TV STICK 4K



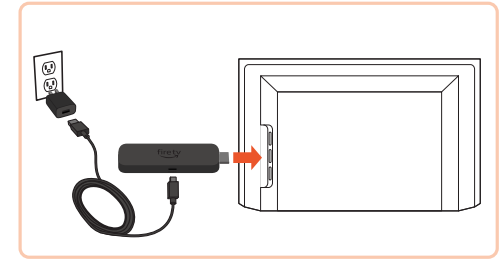
Also included:



MEET YOUR ALEXA VOICE REMOTE



CONNECT YOUR FIRE TV STICK 4K



- 1 Plug your Fire TV Stick 4K into your TV's HDMI port and connect one end of the power cable to your stick.
- 2 Connect the other end of the power cable to the power adapter, then plug the adapter into a power outlet.

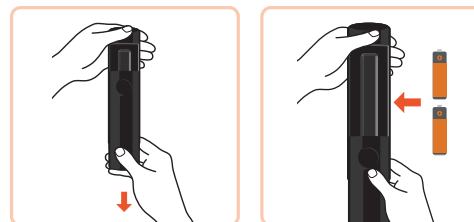
SET UP YOUR REMOTE



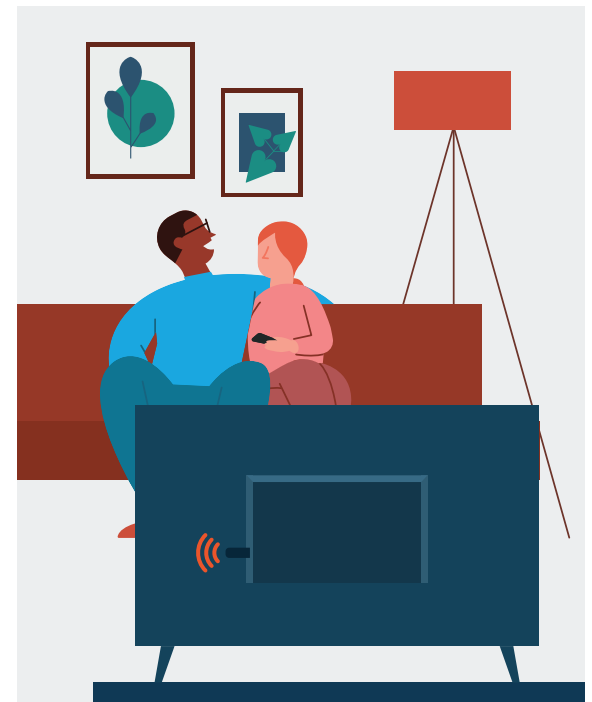
Optional: use the included HDMI extender if it's difficult to plug your Fire TV Stick 4K into your TV's HDMI port.

- 3 Turn on your TV and switch to the appropriate HDMI input.

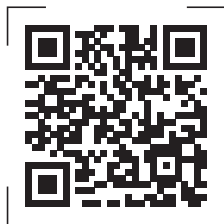
Tip: use the remote that came with your TV to select the HDMI source or input.



- 1 Open the back of the remote and insert the included batteries.
- 2 Follow the on-screen instructions to pair your Alexa Voice Remote, and to control the power and volume on your compatible TV.
Tip: if the remote isn't pairing, press and hold Home until the LED flashes, or try reinserting the batteries.



**SCAN FOR MORE HELP
AND
ACCESSIBLE INSTRUCTIONS**



Scan the QR code or visit:
amazon.com/setup/firetvstick4k