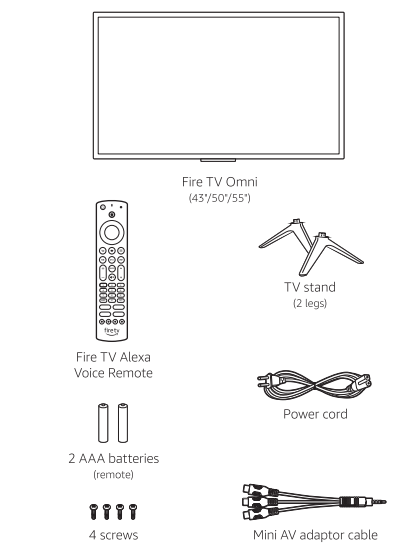


What's in the box

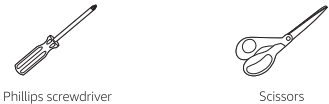


**STOP:** Before using your new product, please read these instructions and keep them for reference. Do not plug your power cord into the wall until all other devices have been connected.

Setting up your Fire TV Omni

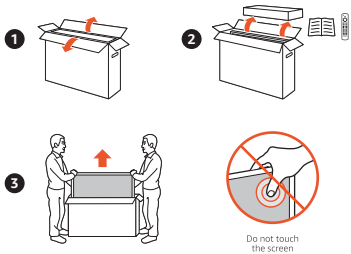
**WARNING:** Do not install while the TV set is turned on. This may result in personal injury from electric shock.

Tools you'll need



Getting your TV out of the box

This requires two people.



Remove legs, remote, documents and any other accessories from the upper styrofoam tray before removing the TV from the box. Remove the TV, keeping it in its plastic bag, from the carton and place it face down on a large, flat surface like a table or countertop. Before disposing of the packaging, make sure you've removed all parts and accessories.

Base installation

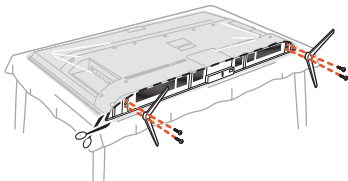
**WARNING:** Never place a TV in an unstable location. The TV may slide or fall and cause serious injury to a child or adult and serious damage to the TV.

This requires two people.

With the TV resting on a flat surface, attach the double-legged support base to the TV using the included screws.

The legs are interchangeable and can be installed on either side.

**Note:** Illustrations below are provided for reference only and may differ from the actual product appearance.



Wall mounting

**WARNING:** If you mount this TV on a wall, follow the instructions exactly as set out in the instructions provided with the wall mount (sold separately). If it is not correctly mounted, the TV may slide or fall and cause serious injury to a child or adult and serious damage to the TV.

This requires two people.

VESA mounting pattern:

(43" and 50") TVs: 200 mm x 200 mm

(55") TVs: 400 mm x 300 mm

Compatible screws:

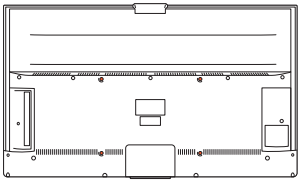
(43" TVs: Type M6, 12 mm length

(50" and 55" TVs: Type M6, 15 mm length

**To ensure safe installation, follow these safety precautions:**

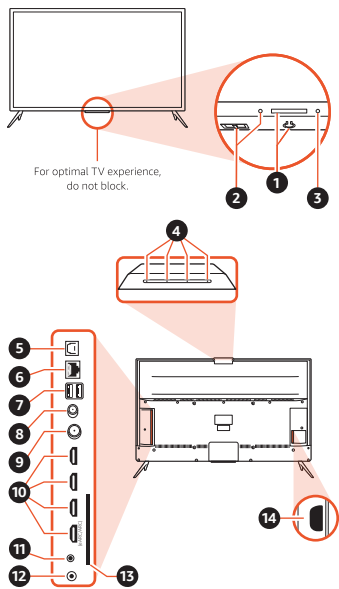
- Check that the wall can support the weight of the TV set and wall mount assembly.
- Follow the mounting instructions provided with the wall mount.
- The TV set must be installed on a vertical wall.
- Only use screws that are suitable for the wall's material.
- Ensure no one can trip over the TV cables.

**Note:** Illustrations below are provided for reference only and may differ from actual product appearance.



**Note:** Do not rest the TV on the bottom

Getting to know your Fire TV Omni



- 1. Power button**  
Press once to turn the TV on while in standby mode.
- 2. Microphone on/off switch**  
Controls the microphones. When the switch is off, you'll see a red light.
- 3. LED indicator**  
The colour indicates what your Fire TV is doing.
- 4. Microphones**  
The built-in microphones let you control your TV and content with your voice and Alexa.
- 5. Optical audio output (S/PDIF)**  
Connect an optical cable (sold separately) from the TV to the optical input on your receiver or soundbar.
- 6. Ethernet/LAN**  
Ethernet (10/100 Mbps) to connect to your internet modem or home network.
- 7. USB**  
Can be used to connect a USB cable.
- 8. Satellite Input**  
Used to connect to a satellite dish.
- 9. Antenna/Cable**  
Can be used to connect a coaxial cable or antenna.
- 10. HDMI ports**  
The 4 HDMI (High-Definition Multimedia Interface) ports can be used to connect devices like gaming consoles or cable and satellite boxes. The HDMI (eARC) port has the additional ability to use the audio return channel to send digital audio to a receiver or soundbar.
- 11. Mini AV port**  
Can be used to connect AV devices.
- 12. IR emitter port**  
Connect an IR emitter cable to control other devices by IR commands from your TV.
- 13. Common interface slot**  
Allows access to subscription TV services.
- 14. AC-in (input)**  
Use to connect the supplied power cord to your TV.

**Alexa is designed to protect your privacy**

**Wake word and indicators**  
Alexa doesn't begin listening until your TV detects the wake word (for example, "Alexa"). A blue light lets you know when audio is being sent to Amazon's secure cloud.

**Microphone controls**  
You can electronically disconnect the microphones by sliding a switch.

**Voice History**  
Want to know exactly what Alexa heard? You can view and delete your voice recordings in the Alexa app at any time.

These are just a few of the ways that you have transparency and control over your Alexa experience. Explore more at [amazon.co.uk/alexa/privacy](https://amazon.co.uk/alexa/privacy).

**General operation**

**Power on your TV**  
Follow the instructions on this page for switching on your TV and the remote control before going on to the following pages and the channel setup procedure.

1. Connect the power cord FIRST to the television (AC-in port), THEN to a socket.

**Note:** If the power cord is damaged, do not plug it into a socket under any circumstances, as there is a risk of electric shock.

2. (Optional) Connect an outside aerial to the antenna-in port on the back of the TV. This is required to receive broadcast television.
3. Press the power button located at the bottom centre of the screen.
4. You can also use the included remote to power on your TV.

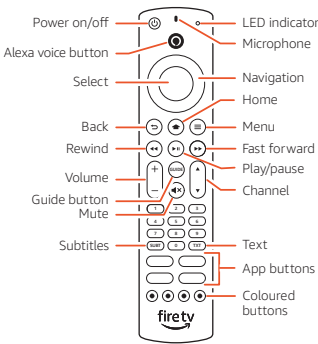
**Turn off the TV**  
To put your TV into standby mode, press and hold the power button on your remote until you see the screen turn off. To completely power off the TV, unplug the cord from the socket.

**Remote pairing**

Insert two AAA batteries into the remote control.

Your Fire TV Alexa Voice Remote should automatically be paired with your new Fire TV. If there are issues, you will be prompted to pair your remote by pressing the Home button. If you continue to have issues, please try reinserting or replacing the batteries and repeating this step.

For more troubleshooting and information, go to [amazon.com/devicesupport](https://amazon.com/devicesupport).



Complete the on-screen setup

Using your Fire TV Alexa Voice Remote, follow the on-screen instructions to choose your language, select your Wi-Fi network and register your device.

Network connection

Your TV is internet-ready. It can be connected to your home network in two ways:

- Wired, using the Ethernet connector on the back of the TV.
- Wireless, using your wireless network.

Connecting to a wireless network

1. Ensure you have:
  - A router broadcasting a high-speed wireless signal.
  - Your Wi-Fi password if your network is password protected.
2. Select your Wi-Fi network from the networks displayed on the screen.
3. If prompted, add your Wi-Fi password through your remote during the on-screen setup.

Connecting to a wired network

1. Ensure you have:
  - An Ethernet cable (not included) long enough to reach your TV.
  - A router or modem with an available Ethernet port.
2. Connect one end of the Ethernet cable to the Ethernet port on your Fire TV and the other end to any available Ethernet port on your modem or router.
3. Your Fire TV will automatically configure your Ethernet settings. Follow the on-screen instructions to complete your setup.

Tips and troubleshooting

Wireless network

- Using the included remote control, go to Settings > Network from the Main Menu, then select your network from the list displayed. If your network is hidden, enter your network name.
- If you see a lock icon, your Wi-Fi network requires a password. This password is not your Amazon account password.
- For best performance, use the 5GHz band on your wireless router if available. Do not place your router in a cabinet as it may impact Wi-Fi signal strength.

Wired network

If you're having trouble with your Ethernet connection, verify that the Ethernet cable is properly connected and then restart your TV.

General tips and troubleshooting

No picture, no sound

1. Check to see that your power cord is securely plugged into the socket.
2. Make sure you have selected the correct input source.
3. Plug another electrical device into the power socket to make sure the socket is working.

Normal picture, no sound

1. Make sure the TV is not muted. Press the Vol+ button to increase volume.
2. Check to see if your TV speaker is turned off. Go to Settings and select Display & Sound.
3. If you have connected external sound equipment, ensure it is powered on and that you have selected the correct input source.

For more troubleshooting and information, go to [amazon.com/devicesupport](https://amazon.com/devicesupport).

To learn more about your Fire TV Omni and its advanced features, scan the QR code below or visit: [www.amazon.co.uk/help/firetvsmarttv](https://www.amazon.co.uk/help/firetvsmarttv)



Something's always on

You'll never run out of things to watch on Fire TV. Easily download your favourite apps like Netflix, Prime Video, YouTube and Disney+. Access thousands of hours of free films and TV episodes from popular ad-supported streaming apps like Freevee and Pluto TV. Watch or browse live TV, sport and channels from Live on the Main Menu. With Profiles, everyone in your household can quickly get recommendations tailored to what they like.

Hands-free Alexa

Use your voice to find, launch and control your entertainment. Alexa can also help start a music playlist, dim the lights, show the weather and view the front door camera.

"Alexa, turn off the TV."

"Alexa, find films."

"Alexa, turn up the volume."

"Alexa, play top music hits."

"Alexa, rewind 30 seconds."

"Alexa, what's the weather?"

"Alexa, set a timer for 5 minutes."

To learn more about what Alexa can do, just ask, "Alexa, what can you do?"

*Certain services and features are subject to change or withdrawal at any time, may not be available in all languages, areas or 4K and may require separate subscriptions.*