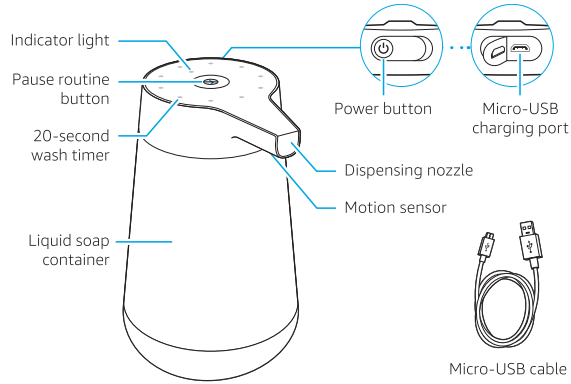


Get to know your Smart Soap Dispenser



Indicator light colors

Setup

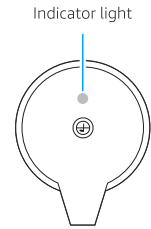
- Blue flashing: Ready for setup
- Blue solid: Setup complete

Battery

- Green: Fully charged
- Orange: Charging
- Red: Low battery

Connection

- White flashing: Ready to pair with an Echo device
- White solid: Paired with an Echo device
- Yellow flashing: Disconnected from wifi



Getting started

Set up your device with Alexa

Note: Before setting up your device, have your wifi network name and password ready.

- On your phone or tablet, download and install the latest version of the Alexa app from the app store.
- Turn on your Smart Soap Dispenser. When the blue indicator light appears, open the Alexa app and follow the on-screen instructions.* If prompted by the app, scan the 2D barcode on the back page.
- If you have a compatible Echo device, the app will walk you through pairing it with the dispenser and setting up a routine. For additional help with pairing and routines, go to Help & Feedback in the Alexa app or visit www.amazon.com/devicesupport.

*If you aren't prompted to start setup, tap the More icon at the bottom right of the screen, tap Add a Device, and select Soap Dispenser.

Once setup is complete, follow the instructions on the next page.

Add liquid hand soap

- Make sure the device is powered off.
- Turn the lid 45 degrees counterclockwise to open.
- Fill liquid hand soap* of your choosing to the MAX line of the container.
- Turn the lid 45 degrees clockwise to close. Press the power button to turn the device back on.

*Smart Soap Dispenser only works with standard liquid hand soap. Do not fill with foaming soap or any alcohol-based product, including hand sanitizer.

Frequently asked questions

How do I prime the dispenser?

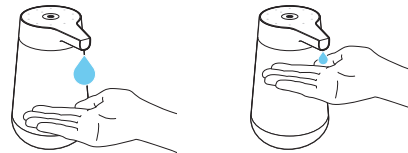
The first time you use the dispenser after filling it with soap, you will need to prime it. Place your hand under the sensor for a moment, then remove it. Repeat multiple times until soap dispenses.

How do I pause a routine?

If you want to wash your hands without starting the routine, press the pause routine button on the top of the device. If you press it while washing, it will take effect the next time you use the dispenser.

How does dynamic dispensing work?

Place your hand farther from the nozzle for more soap and closer for less.



Helpful tip

To prevent accidental dispensing, make sure you turn off the device before refilling it with soap, picking it up, or moving it.

Device support

For help and troubleshooting, go to Help & Feedback in the Alexa app or visit www.amazon.com/devicesupport.